

October 28th, 2021

The Right Honourable Justin Trudeau
Prime Minister of Canada
House of Commons
Ottawa, ON K1A 0A2

Dear Prime Minister,

On behalf of the Canadian Society of Landscape Architects, I would like to congratulate you on leading your party to victory in the 2021 federal election.

The Canadian Society of Landscape Architects (CSLA) is a professional organization with over 2,800 landscape architects as members. Landscape architects understand the linkages between a healthy and sustainable environment, and a thriving human society. We are concerned with environmental protection, with social vulnerability, with the equitable access to resources, with sustainably fostering the needs of the private sector, and with the creation of beautiful, functioning cities and towns that support local well-being and attract investment. Landscape architects respect the natural and cultural landscapes of the past, and plan sustainability for the future.

As the voice of the profession in Canada, the CSLA is an advocate for its members on wide-ranging and important issues such as urban design and urban renewal, sustainability, conservation of our natural and cultural heritage, reconciliation and mitigation and adaptation to the changing climate.

Landscape architects in Canada have for decades played integral roles in the conservation of the Canadian environment and in the development of Canadian communities. We have shaped many of the country's iconic landscapes through sound planning, aesthetic and functional design and dedication to the protection and sustainability of cultural assets and protected areas in towns, cities and in the remaining Canadian wilderness. The work of landscape architects is all around us, whether in the quiet beauty of Lake Louise, the solace of an urban park, the preservation of historically significant green spaces, the improved functioning of a storm water system, or the efficient operation of a busy streetscape and shopping area on Saturday.

The CSLA and its Members share several of the values you promoted in your election platform – recognizing that Canada's landscapes are iconic and vital, understanding the value in the diversity of Canadians, inspiring stewardship of the land and the water, expanding knowledge through science and communication, and demonstrating innovativeness and leadership on issues and challenges of importance to all Canadians. We appreciate your commitment to investing in our communities, investing in green infrastructure, creating better cities, and in reducing the impacts and maximizing the opportunities created by global and local climate change.



Seve, by Collectif Escargo

Projet paysage de la MRC Brome-Missisquoi

Biodiversity Corridor, Borough of Saint-Laurent

Place Alice-Girard

Federal Dollars at Work for Resilient Communities: Landscape architects provide leadership in many professional capacities at all levels of government and in the private sector working towards a contemporary form of resiliency as our communities grow. The economic and social benefits of incorporating natural and nature-based solutions far outweigh those of a more traditional approach of community infrastructure and can have a high economic multiplier effect.

The talent and skill of our landscape architectural professionals can be seen in the public realm on prominent projects in every major city, province and territory in the country. A few well-known initiatives include **Bring Back the Don / Naturalization of the Don River** and the **Port Lands** community redevelopment on the Toronto waterfront; **The Forks** river and floodway renewal in Winnipeg, the **Lachine Canal** in Montreal, **Calgary's Downtown Flood Barrier** project, the establishment of the **Agguttinni Territorial Park** in Clyde River Nunavut, and **Nova Scotia's Flood Mapping** studies. Most recent award-winning projects recognizing the work of landscape architects include City of Vancouver's innovative **Rain City Strategy, a Green Rainwater Infrastructure and Management Initiative** and **Dale Hodges Park / Stormwater Facility and Public Artwork** in Calgary.

These multimillion-dollar investments were realized with infusions of federal funding and involve the creative leadership of landscape architects and urban designers who are committed to "big picture landscape thinking" around urban renewal, urban ecological restoration and climate change adaptation and mitigation.

Through the CSLA's work and its partnerships, we are working to ensure a better understanding of the challenges of climate adaptation, urban canopy, human health and well-being, reconciliation, and equity. We believe that these core issues are at the heart of Canada's landscapes, and require thoughtful, long-term investment in planning for the future by the federal government.

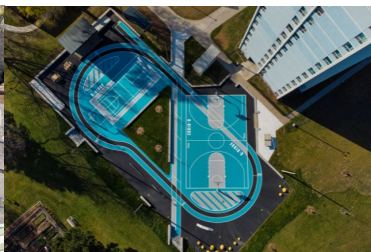
The CSLA is most impressed by the recent Ministry of Infrastructure and Communities' release of the **National Infrastructure Assessment "Building the Canada We Want in 2050"**. We applaud the government's leadership in establishing broadened parameters for the definition of community infrastructure and establishing the concept of "nation-building infrastructure". (Please refer to our submission to the Ministry at: www.csla-aapc.ca/advocacy).

We have also provided a response to the government's **2022 Pre-Budget** process led by the **House of Commons Standing Committee on Finance** (please refer to our submission to the Ministry at the following link: www.csla-aapc.ca/advocacy). The Canadian Society of Landscape Architects (CSLA) calls on the federal government to:

- Invest in the enhancement of our public spaces and green infrastructure to ensure healthy, livable communities.
- Invest to strengthen community climate adaptation and mitigation plans through nature-based solutions.
- Invest in research and development for advancement of green technology, nature-based solutions, and design innovation.
- Invest in Indigenous community renewal, and programs that build a healthy conservation economy.
- Invest in employment and training opportunities for youth within the profession and related fields.
- Invest in a Canadian design culture that showcases landscape architectural talents and environmental expertise.



Univ. of Guelph Child Care and Learning Centre



Gordonridge Community Multi-Sport Court



Saugeen First Nations Creator's Garden and Amphitheatre Restoration

We are inspired, Prime Minister, by your agenda, and eager to contribute to the discussion, to offer the service of the senior members of our profession in policy consultation and use the interdisciplinary approach of landscape architecture to make our country a better place for all Canadians. We have included with this letter a copy of our magazine and our brief on Liveable Communities for your reading pleasure. These documents contain examples of not only the beauty of outdoor spaces achieved by our profession, but also of the profession's role in the stewardship and the management of our outdoor spaces for the benefit of citizens.

Should you wish to learn more about the CSLA or call on us for any reason please contact our Executive Director, Michelle Legault, at 613-668-4775 or at executive-director@csla-aapc.ca.

Sincerely,



Carolyn Woodland, OALA, FCSLA, MCIP, RPP
President, CSLA

Encl. Landscapes|Paysages Magazine
Liveable Communities