

November 18th, 2021

Her Excellency the Right Honourable Mary May Simon
Governor General of Canada
Rideau Hall
1 Sussex Drive
Ottawa, Ontario K1A 0A1

Your Excellency,

On behalf of the Canadian Society of Landscape Architects, I would like to congratulate you on your appointment as Governor General of Canada.

The Canadian Society of Landscape Architects (CSLA) is a professional organization with over 2,800 landscape architects as members. Landscape architects understand the linkages between a healthy and sustainable environment, and a thriving human society. We are concerned with environmental protection, with social vulnerability, with the equitable access to resources, with sustainably fostering the needs of the private sector, and with the creation of beautiful, functioning cities and towns that support local well-being and attract new investment. Landscape architects respect the natural and cultural landscapes of the past, and plan sustainably for the future.

As the voice of the profession in Canada, the CSLA is an advocate for its members on wide-ranging and important issues such as urban design and urban renewal, sustainability, conservation of our natural and cultural heritage, reconciliation and mitigation and adaptation to the changing climate.

The Governor General's Medal in Landscape Architecture

We are delighted that the CSLA's landmark award, which honours exceptional landscape architects whose lifetime achievements and contributions to the profession have had a unique and lasting impact on Canadian society, is in the Governor General's name. Past recipients of the medal include Cornelia Hahn Oberlander, George Dark and Peter Jacobs, whose 38-year provincially appointed term with the Kativik Environmental Quality Commission demonstrates how landscape architects contribute to the well-being of communities in every part of the country.



Sève, by Collectif Escargo



Projet paysage de la MRC Brome-Missisquoi



Biodiversity Corridor, Borough of Saint-Laurent



Place Alice-Girard

This award is an occasion for Canadians to celebrate and learn about the contributions landscape architects have made to the urban, rural and wilderness environments of Canada over the last century - since Frederick Todd became the first landscape architect to work in Canada in 1900. The medal is attributed every two years and the next medal will be awarded in 2022: <https://www.csla-aapc.ca/awards/gg-medal>

In previous years, the Governor General's Award in Landscape Architecture was celebrated along with the Governor General's Awards in Architecture at a reception held at Rideau Hall. We hope that, in the Fall of 2022, you will be eager to host these important awards once again and honour the recipients with your presence.

Landscape architects in Canada have for decades played integral roles in the conservation of the Canadian environment and in the development of Canadian communities. We have shaped many of the country's iconic landscapes through sound planning, aesthetic and functional design and dedication to the protection and sustainability of cultural assets and protected areas in towns, cities and in the remaining Canadian wilderness. The work of landscape architects is all around us, whether in the quiet beauty of Lake Louise, the solace of an urban park, the preservation of historically significant green spaces, the improved functioning of a storm water system, or the efficient operation of a busy streetscape and shopping area on Saturday.

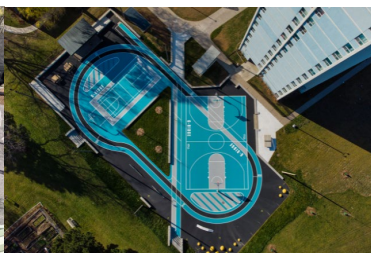
Landscape Architecture in Canada's North

Landscape architects also contribute to the northern landscapes in many ways, as demonstrated by the examples, below. The CSLA is structured as a federation of provincial, territorial and regional component associations and two of our associations, the Nunavut Association of Landscape Architects: <https://www.csla-aapc.ca/society/about-nuala> and the Northwest Territories Association of Landscape Architects: <https://www.csla-aapc.ca/society/nwtala>, are caretakers of the profession in those jurisdictions.

Yellowknife Harbour, where landscape architects created Harbour Plan to create a vision and implementation strategy for this area through consultation events to enable all stakeholders to participate in the Plan's development and review the team's work in progress. The consultation events included workshops, 10 focus group meetings, attendance at a First Nation's drum dance, conversations with First Nation's Elder Council, conversations with First Nation's chiefs, and public presentations. This project was innovative in the methods it used to engage the First Nations in the planning and design process. <https://www.csla-aapc.ca/awards-atlas/yellowknife-harbour>



Univ. of Guelph Child Care and Learning Centre



Gordonridge Community Multi-Sport Court



Saugeen First Nations Creator's Garden and Amphitheatre Restoration

Iqaluit Municipal Cemetery, a project which has transformed the community's perception of what a cemetery can and should be, by drawing on local and traditional knowledge, the thoughtful combinations of natural materials and indigenous cultural elements, creating a dynamic community space where the arctic landscape and its people are remembered and celebrated. <https://www.csla-aapc.ca/awards-atlas/iqaluit-municipal-cemetery>

Iqaluit Kuunga (Sylvia Grinnell) Park, which celebrates and protects a site where Inuit have lived for thousands of years, and that continue to be used by Nunavummiut. This park in Iqaluit is the 'gateway' to the arctic for visitors to Nunavut, offering a first taste of the arctic tundra landscape and featuring a spectacular tidal influenced waterfall, migratory bird and arctic mammal habitats, along with culturally important sites and the landscape architect's role was to encompass the entire park; promote a variety of recreational opportunities with minimal introduction of built features; and engage the community in heritage appreciation and conservation. <https://www.csla-aapc.ca/awards-atlas/sylvia-grinnell-park>

Kinggaaluk Territorial Park, Sanikiluaq Nunavut, where landscape architects developed the Kinggaaluk Territorial Park Master Plan which respects and enhances the unique relationship of Inuit to the land by protecting Inuit rights to use and enjoy the land and its resources, following cultural principles. <https://www.csla-aapc.ca/awards-atlas/kinggaaluk-territorial-park-master-plan>

The CSLA's Reconciliation Advisory Committee

In 2016, the CSLA Board of Directors created the Indigenous Issues Task Force. The Task Force was mandated to create a discussion document and proposed actions to address the Truth and Reconciliation Commission's Calls to Action within the profession. In 2018, the Board of Directors created the Reconciliation Advisory Committee (RAC) and approved an action plan for reconciliation. The RAC is a tireless advocate for Reconciliation within the profession and has developed and undertaken a program of activities which includes training, a statement on reconciliation and the profession, and several other resources for landscape architects.

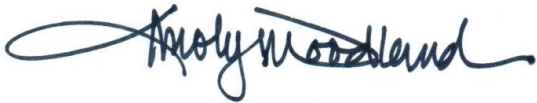
<https://www.csla-aapc.ca/mission-areas/reconciliation>

As you settle into your new responsibilities at Rideau Hall, we hope that you will become familiar with the rich history of landscape architecture talents that have not only contributed across Canada but have established well recognized city building standards for our nation's Capital Region. The work of landscape architects at the National Capital Commission, Parks Canada and Public Works has spearheaded a Canadian showcase for reforested greenways and natural assets, rich cultural urban parks and the stately Confederation Boulevard and Parliamentary precinct. The pride that Canadians have for their beautiful Capital Region cannot be underestimated, and landscape architects have been at the forefront of Ottawa – Gatineau 's public realm for decades.

Through the CSLA's work and its partnerships, we are working to ensure a better understanding of the challenges of climate adaptation, urban canopy, human health and well-being, reconciliation, and equity. We believe that these core issues are at the heart of Canada's landscapes, and require thoughtful, long-term investment in planning for the future.

Should you wish to learn more about the CSLA or call on us for any reason please contact our Executive Director, Michelle Legault, at 613-668-4775 or at executive-director@csla-aapc.ca.

Sincerely,



Carolyn Woodland, OALA, FCSLA MCIP, RPP
President, CSLA

Encl. Landscapes|Paysages Magazine
Liveable Communities