

FOR IMMEDIATE RELEASE

CSLA Announces the Recipients of the 2018 Awards of Excellence: The Upper Fort Garry Provincial Park by HTFC Planning and Design is awarded the Jury's Award of Excellence

Ottawa – March 12th, 2018 - Today, the Canadian Society of Landscape Architects (CSLA) announced the recipients of the Awards of Excellence. This year, 15 projects received a national award and one project, the Fort Garry Provincial Park by HTFC Planning and Design, was selected for the Jury's Award of Excellence, given to one project per year which best demonstrates the CSLA's vision (advancing the art, science and practice of landscape architecture).

These award-winning projects are preeminent examples of Canadian landscape architecture. They illustrate the range of what landscape architects do and how landscape architects are helping to reshape our communities - defining the places we want to live, work and play.

Winners were selected by a national jury of landscape architects. The principal criteria applied by the jurors were:

- Demonstration of a deep understanding of the craft of landscape architecture and attention to composition and detail
- Demonstration of excellence in leadership, project management, breadth of work, new directions or new technology
- Innovation in concept, process, materials or implementation
- Promotion of the discipline amongst related professions, clients and the general public
- Demonstration of exemplary environmental and / or social awareness

National Awards are for work that demonstrates excellence against all judging criteria. They become nominees for the **Jury's Award of Excellence**, given to a project which best demonstrates the CSLA's vision (advancing the art, science and practice of landscape architecture).

The recipient of the 2018 Jury's Award of Excellence and a National Award is:



Upper Fort Garry Provincial Park

HTFC Planning and Design
Contact: Glen Manning, MALA, FCSLA
Category: Medium-Scale Public Landscapes

According to the Jury, Upper Fort Garry Provincial Park is an inspired recipe for drawing people in to an important piece of history. Little remained on this important site; it fell to the landscape architect to tell its story.



About the Project: Upper Fort Garry offers a striking departure from standard heritage interpretation, embracing the ambiguity inherent in our historic records to fuel an approach to urban place-making that combines crowd-sourced content, grassroots programming, art and technology to honour the fort's heritage and stimulate new conversations on the history being written today.

The 2018 National Award recipients are:



Taking Back the Riverbank: Pijiniuskaq Park & King Street

Ekistics Plan+Design
 Contact: Devin Segal, APALA, CSLA
 Category: Small-Scale Public Landscapes



Ponderosa Commons

Hapa Collaborative
 Contact: Joseph Fry, BCSLA, CSLA
 Category: Medium-Scale Public Landscape



Surrey Bend Regional Park

space2place
 Contact: Jeff Cutler, BCSLA, CSLA
 Category: Large-Scale Public Landscape



People, Parks and Dogs - A strategy for sharing Vancouver Parks

space2place
 Contact: Jeff Cutler, BCSLA, CSLA
 Category: Research



Kinngaaluk Territorial Park Master Plan

NVision Insight Group Inc.
 Contact: Chris Grosset, NuALA, FCSLA
 Category: Planning and Analysis



Proactive Rejuvenation of Senescent Acacia Slopes along Highways in Hong Kong (A Phased Replacement Project)

Landscape Unit of Highways Department
 Contact: Tony Tung King Mui, OALA, CSLA
 Category: Landscape Management



Birch Grove Residence

Fox Whyte Landscape Architecture & Design Inc.
Contact: Kate Fox-Whyte, OALA, CSLA
Category: Residential Landscapes



Parliament Hill Escarpment Stairway and Site Rehabilitation

Civitas Group
Contact: Diane Matichuk, OALA, AAPQ, CSLA
Category: Small-Scale Public Landscapes



R. Garden: A Modernist Reflection

Virginia Burt Designs, Inc.
Contact: Virginia Burt, OALA, FCSLA, FASLA
Category: Residential Landscapes



Trillium Park and William G. Davis Trail

LANDinc
Contact: Patrick Morello, OALA, CSLA
Category: Medium-Scale Public Landscape



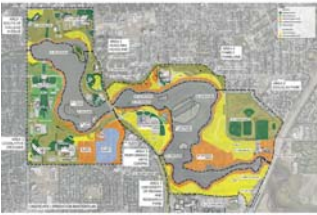
Lethbridge River Valley Parks Master Plan

O2 Planning + Design
Contact: Douglas Olson AALA, FCSLA
Category: Planning and Analysis



Breathe: Edmonton's Green Network Strategy

O2 Planning + Design
Contact: Douglas Olson AALA, FCSLA
Category: Planning and Analysis



Wascana Landscape / Irrigation Master Plan

Scatliff+Miller+Murray
Contact: Bob Somers, MALA, CSLA
Category: Landscape Management



Berczy Park (Toronto)

Claude Cormier et Associés
Contact: Claude Cormier, AAPQ, OALA, FCCLA
Category: Small-Scale Public Landscapes

The awards will be presented at a gala during the CSLA-OALA Conference to be held in Toronto on April 7th, 2018. Hi-resolution images of winning projects are available on the CSLA website at <http://www.csla-aapc.ca/awards/awards-excellence> or upon request.

-30-

The Canadian Society of Landscape Architects (CSLA) is a professional organization with over 2,800 landscape architects, associate landscape architects, and students of landscape architecture as members represented by provincial and territorial associations. In addition, the CSLA accredits several academic landscape architecture programs across the nation.

Landscape architects today are engaged in the design, planning and management of urban, rural and natural environments in all Canadian provinces and territories and in many countries worldwide. Canadian landscape architects are well-regarded for their vision, creativity, sensitivity and practicality in all aspects of professional practice, creating unique functional outdoor spaces for our citizens, as well as protecting and enhancing the environment. The CSLA is the organization which gives landscape architects a national voice and, through its provincial component associations, regulates the profession of landscape architecture through licensing or certification of its members.

For more information:

Michelle Legault, Executive Director
Email: executive-director@csla-aapc.ca
Office: 866-781-9799
12 Forillon | Ottawa ON | K2M 2W5
www.csla-aapc.ca