



# Cornelia Hahn Oberlander, OC

Governor General's Medal in  
Landscape Architecture  
2016

“We need to take care of our environment. We have to have places to play for children. We have to have places for recreation.”

*Cornelia Hahn Oberlander, OC*



CANADIAN GOVERNMENT PAVILION  
CHILDREN'S CREATIVE CENTRE / PLAY AREA

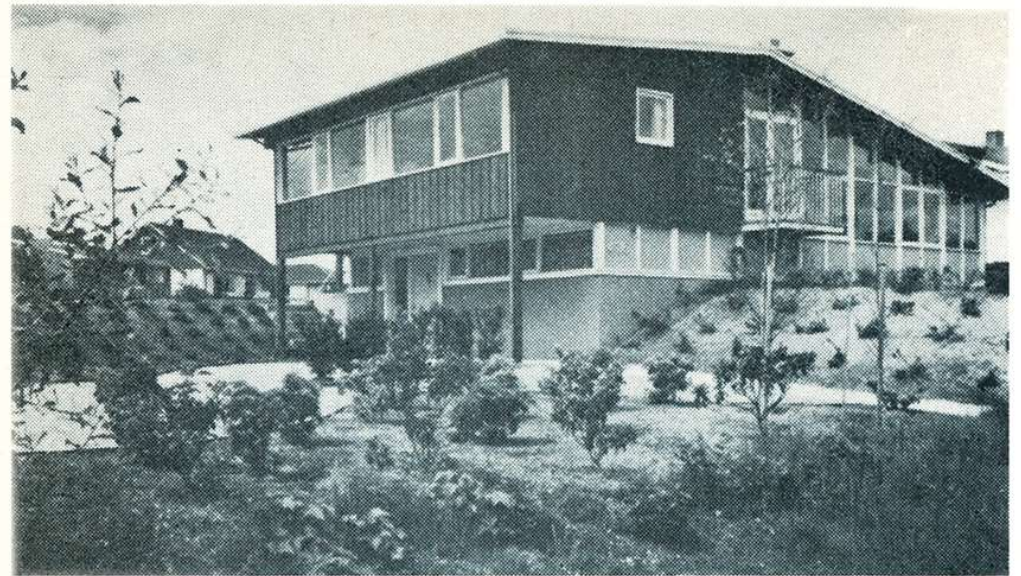
LANDSCAPE ARCHITECT  
CONNELL HARRIS JOHNSON  
1111 OLYMPIC ST. TORONTO, ONT.









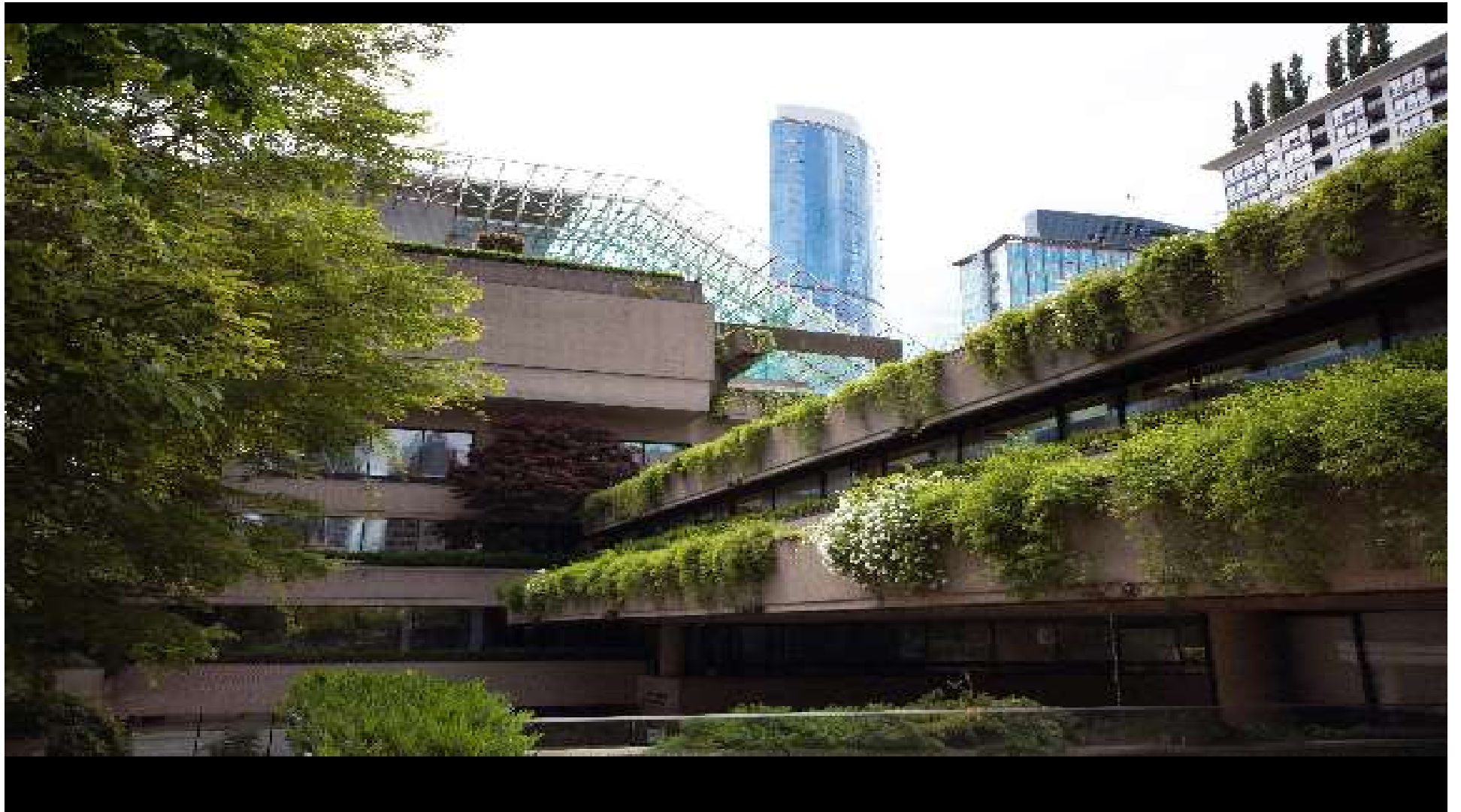


“What we need today are multidisciplinary landscape architects who think conceptually and perceptually to keep pace with present changing social needs which challenge us daily.”

*Cornelia Hahn Oberlander, OC*



















“I dream of Green Cities with Green Buildings  
where rural and urban activities live in  
harmony.”

*Cornelia Hahn Oberlander, OC*













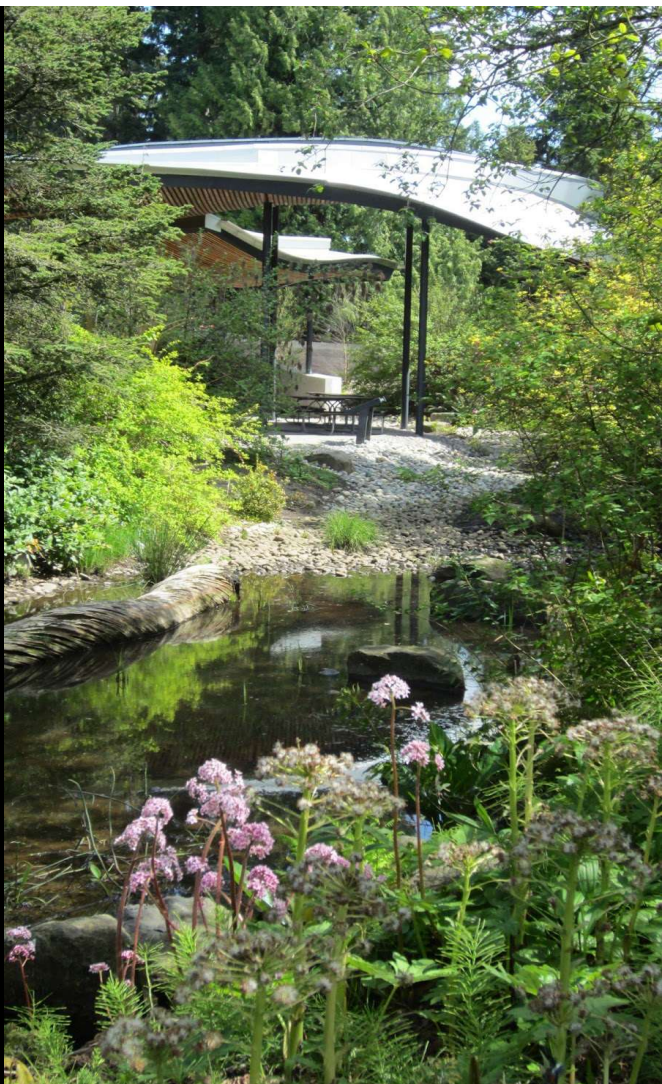
VanDusen Botanical Gardens  
Rainwater Capture



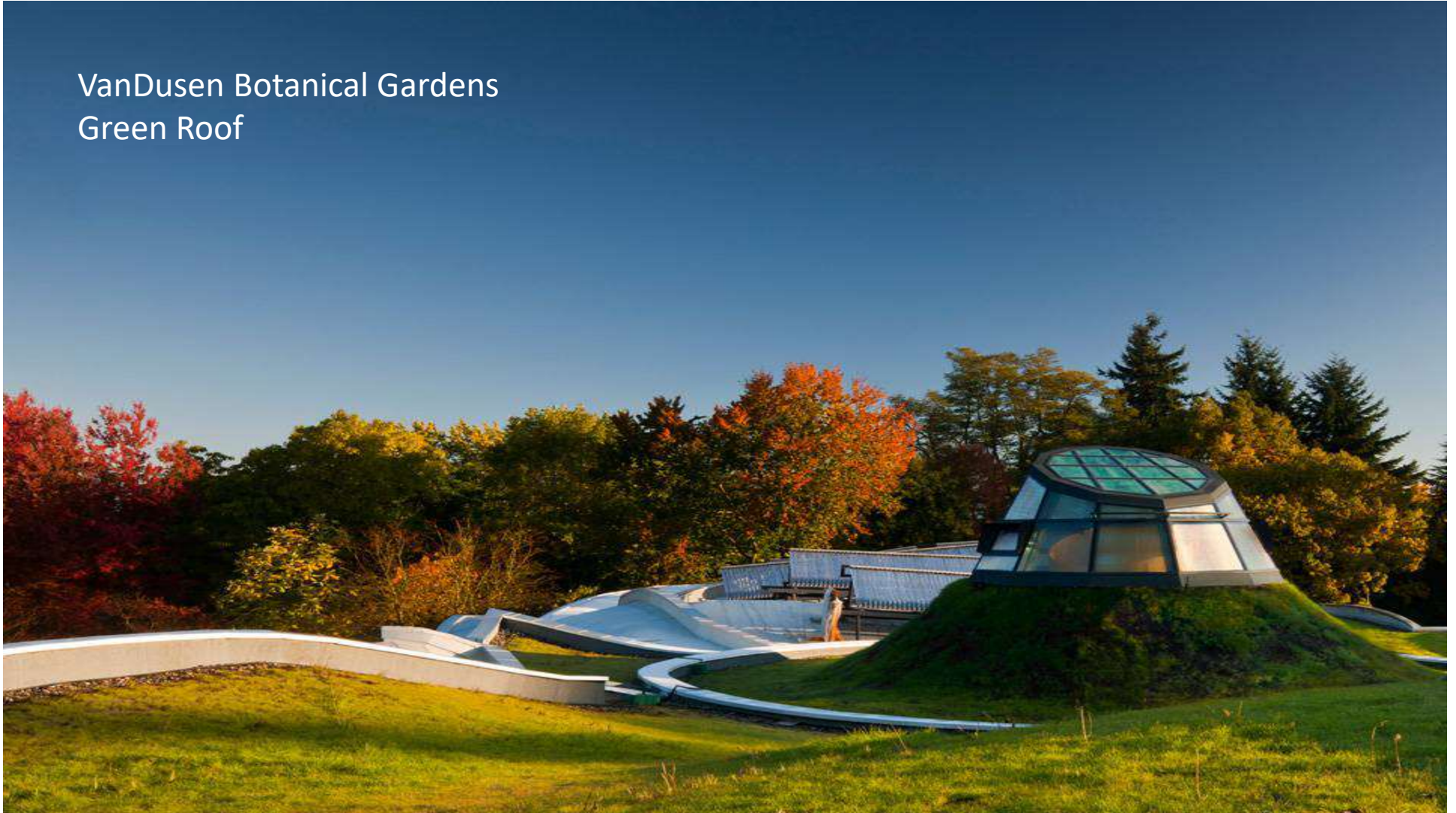


“Cornelia has become a fearless innovator in the field of landscape architecture, in which nothing has been too small or too big in engaging her keen analysis and the creation of sustainable landscapes.”

*Phyllis Lambert*



VanDusen Botanical Gardens  
Green Roof





Museum of Anthropology, UBC



Museum of Anthropology  
Native Plants on Haida Mound







Museum of Anthropology  
Haida Beach

“You can’t do these things in a vacuum. You have to have many collaborators on your team.”

*Cornelia Hahn Oberlander, OC*



National Gallery of Canada  
Tiaga Garden







Canadian Embassy  
Berlin



Canadian Chancery  
Washington, DC



“Nobody talked about green roofs in 1974. It’s become a trend now.”

*Cornelia Hahn Oberlander, OC*



Vancouver Public Library Roof Garden





“Cornelia is one of the significant landscape architects of her generation.”

*Moshe Safdie*









“Cornelia Oberlander continues to be a remarkable artist, visionary and a vital force in all matters of landscape architecture.”

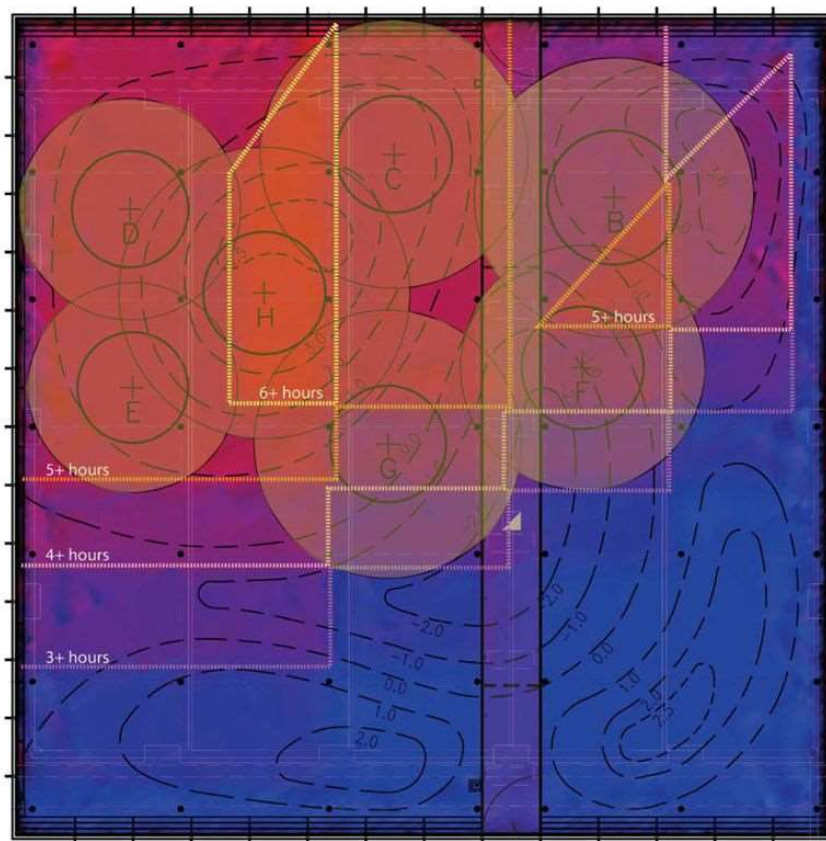
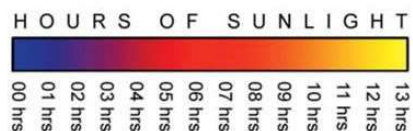
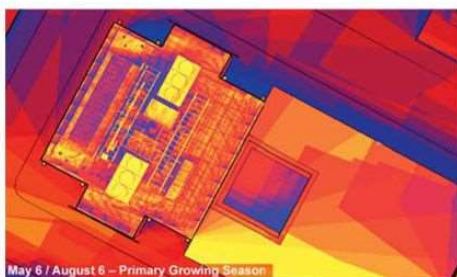
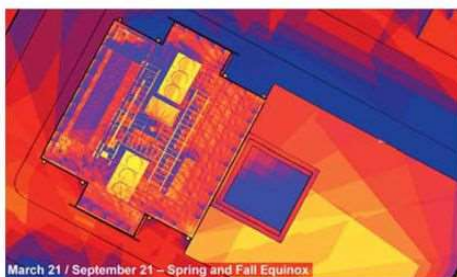
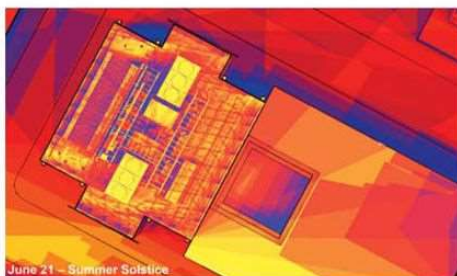
*Barry Downs*





New York Times Building  
Lobby Garden





## SOLAR ANALYSIS

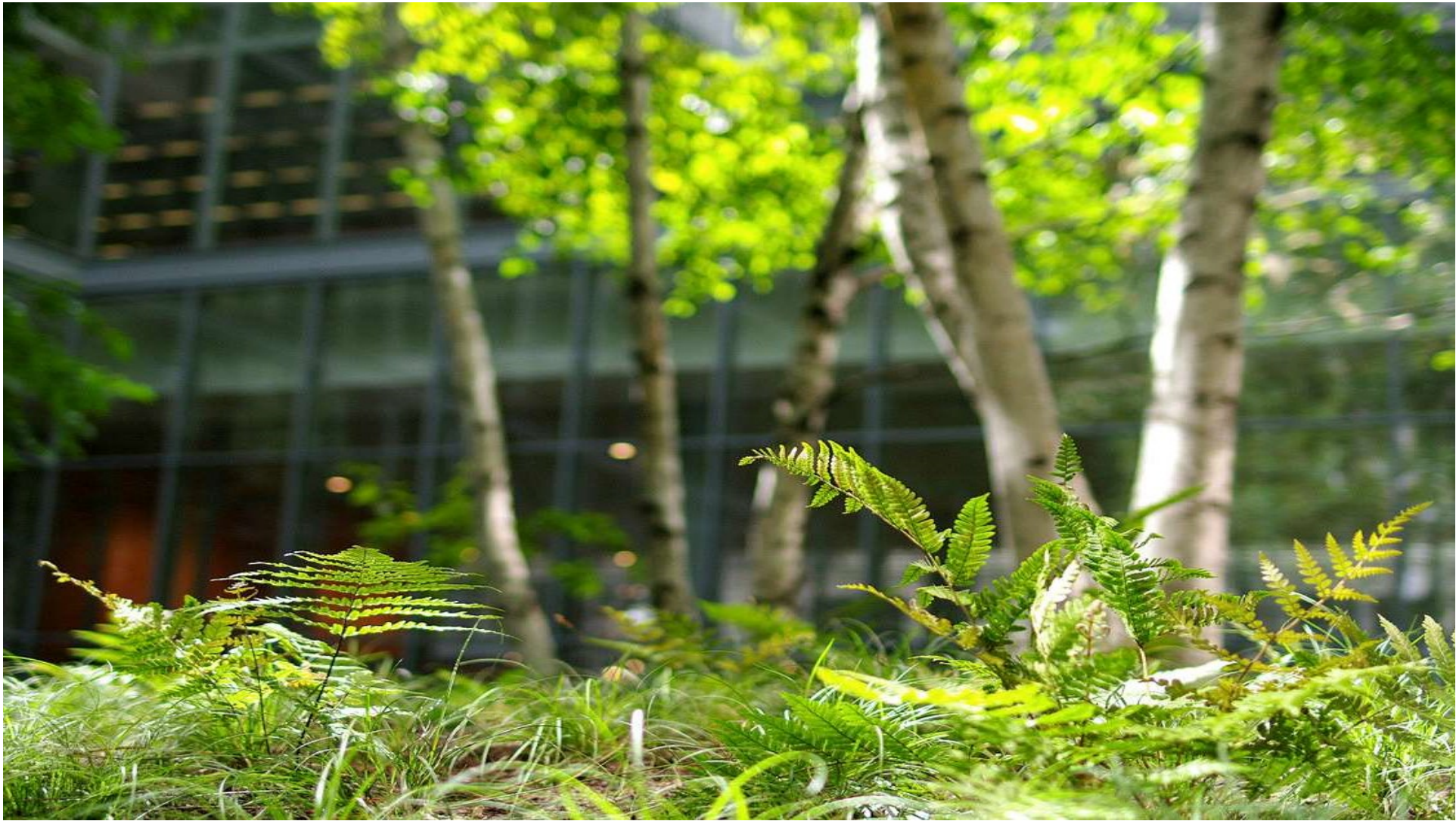
Microclimatic conditions were measured through 3-D modeling simulations of seasonal solar radiation levels, wind velocity and temperature variations to identify horticultural limitations and inform a carefully calibrated design.









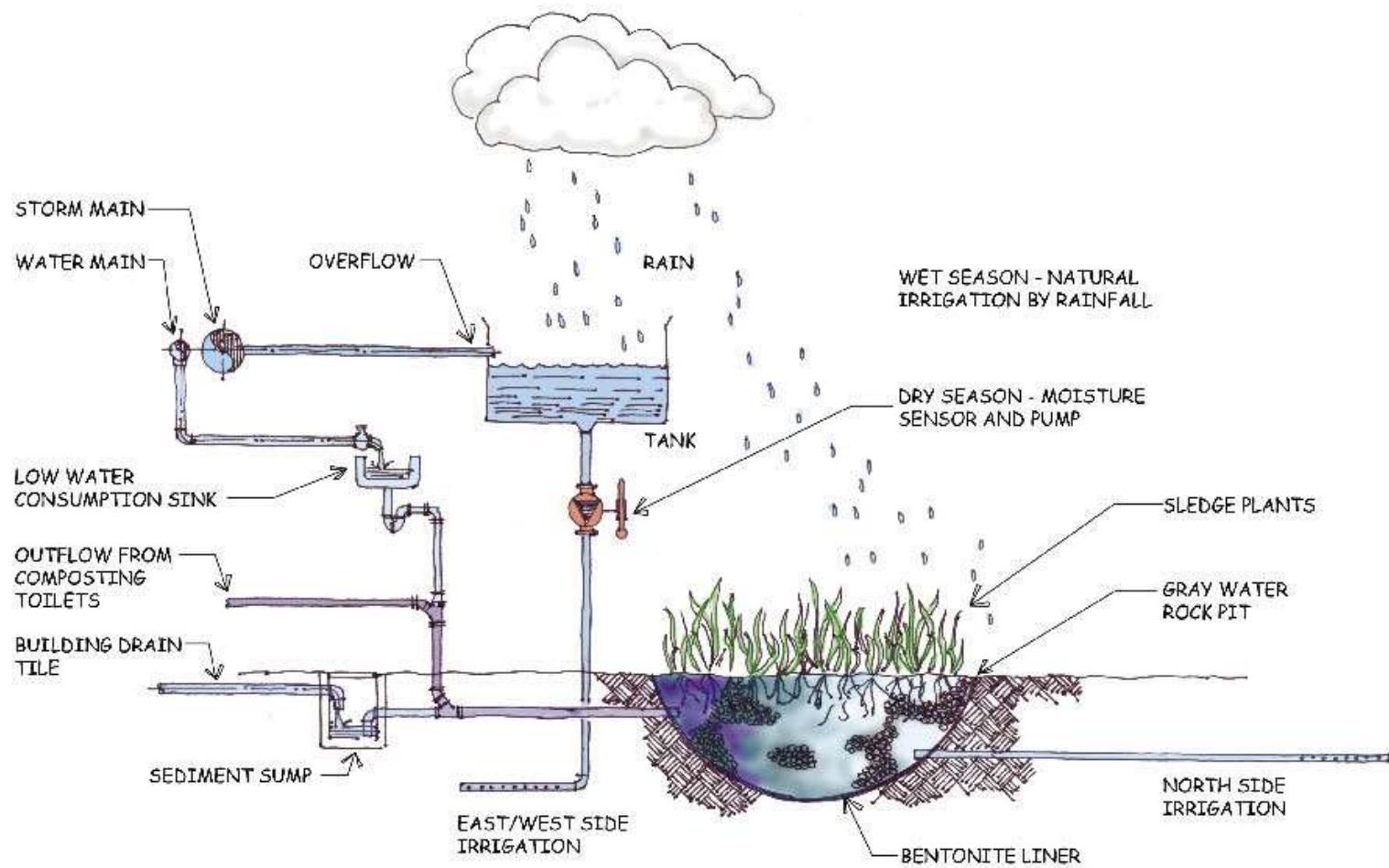


“Cornelia has never been too busy or reluctant to share her experiences, whether professional or personal, with women in the design professions. “

*Eva Matsuzaki, Architect*











“I dream of a green city and strive to achieve meaningful fractions of the global garden by respecting biodiversity, bringing nature into the city. Such a dream can only be realized by teamwork with other disciplines, together with politicians and an aware, participating public of all ages.”

*Cornelia Hahn Oberlander, OC*



“There is a bit of the rebel in Cornelia that enables her to instantly connect with youth.”

*Susan Ng Chung Teacher, Vancouver, BC*





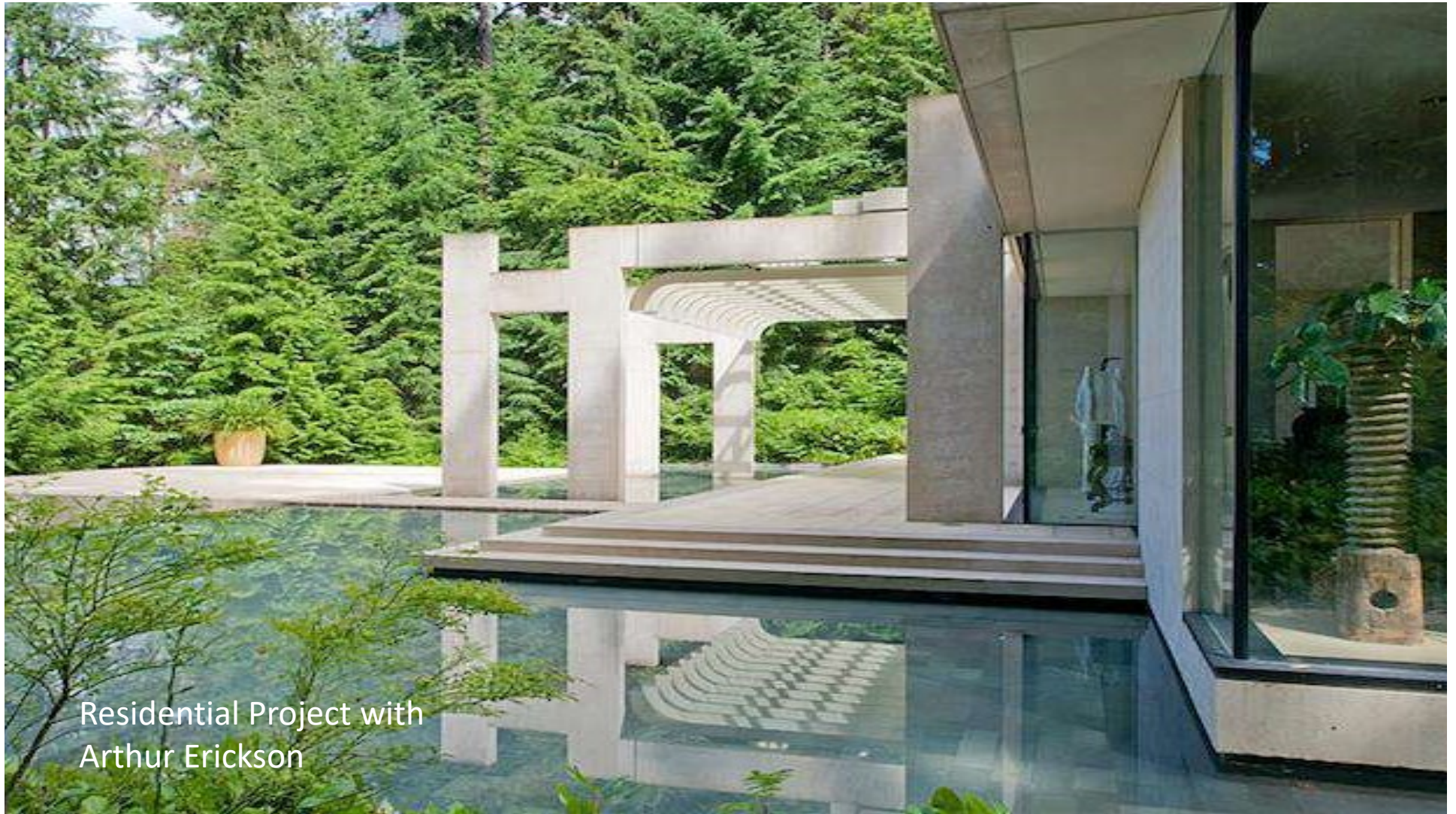






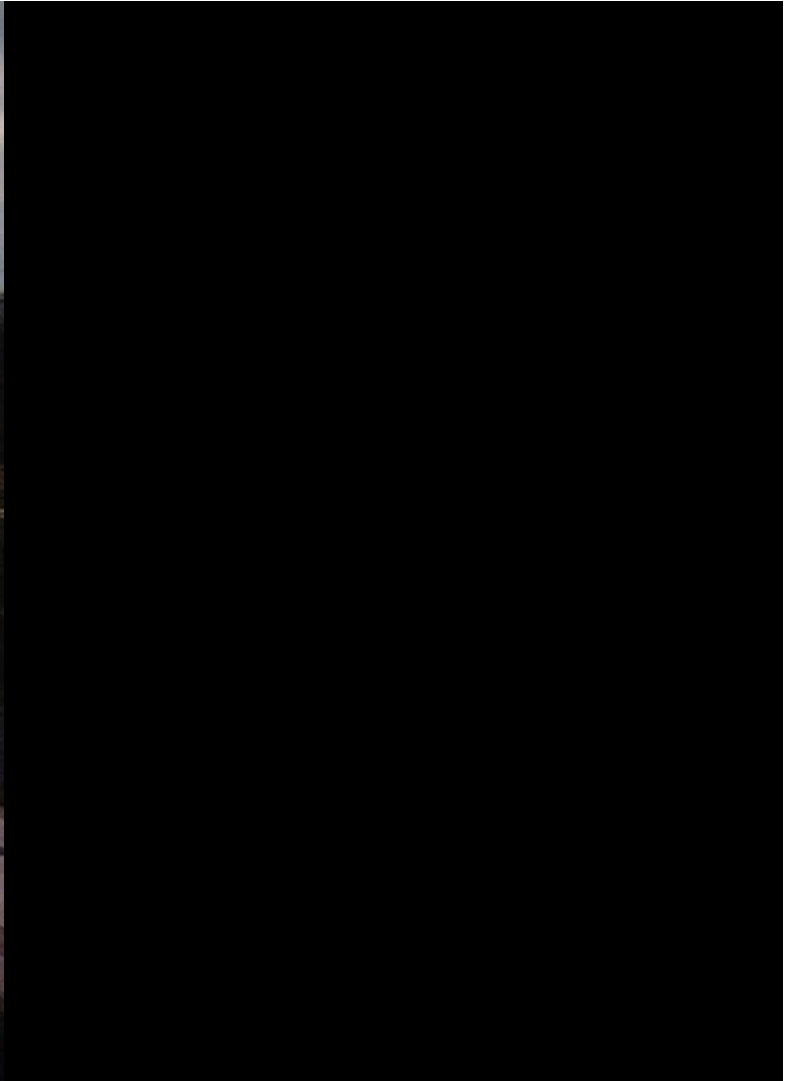
“There are scores of landscape architects who have been the beneficiaries of Cornelia’s extraordinary generosity of spirit...”

*Susan Cohen*









“A painter can’t put the brush down.

I can’t put my mind away from creating places  
for people of all ages and addressing the needs  
of our time.”

*Cornelia Hahn Oberlander, OC*