



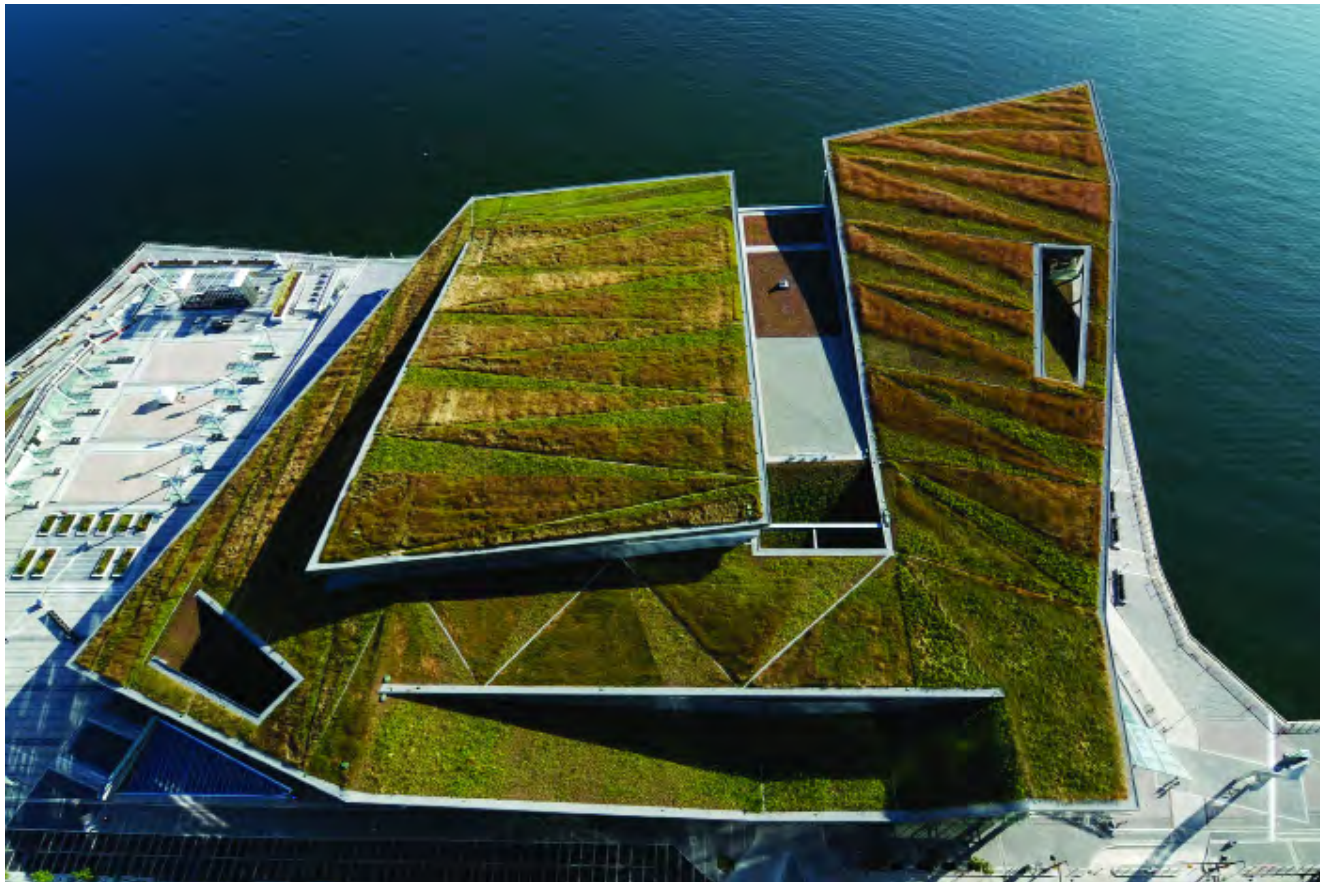
2010 CSLA Awards of Excellence Winners
NATIONAL AWARDS



NATIONAL HONOUR

Vancouver Convention Centre Expansion Project
Vancouver, British Columbia
PWL Partnership Landscape Architects Inc.

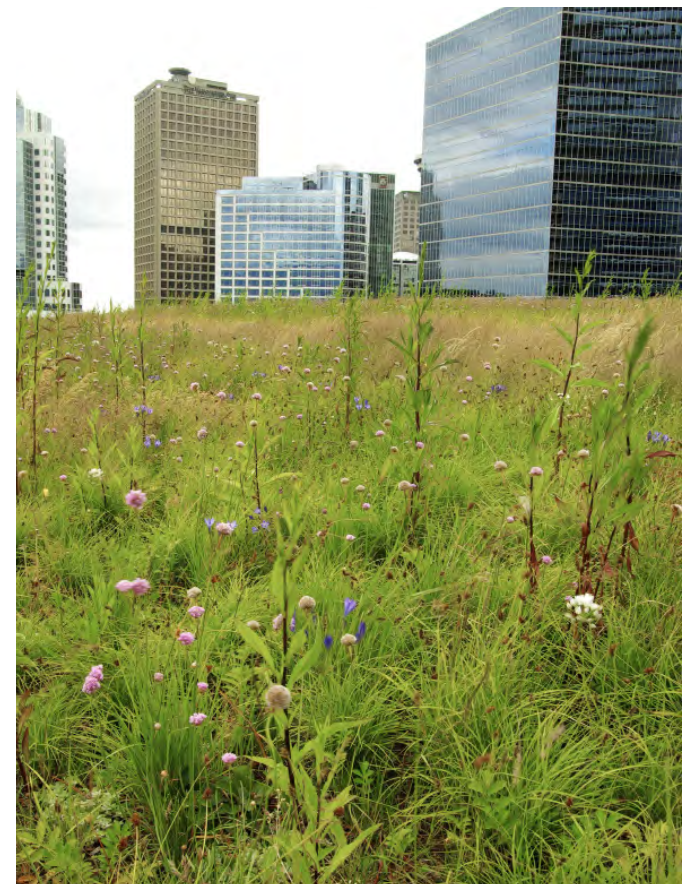
DESIGN



NATIONAL HONOUR

Vancouver Convention Centre Expansion Project
Vancouver, British Columbia
PWL Partnership Landscape Architects Inc.

DESIGN



NATIONAL HONOUR

Vancouver Convention Centre Expansion Project
Vancouver, British Columbia
PWL Partnership Landscape Architects Inc.

DESIGN



NATIONAL HONOUR

Vancouver Convention Centre Expansion Project
Vancouver, British Columbia
PWL Partnership Landscape Architects Inc.

DESIGN



NATIONAL HONOUR

Vancouver Convention Centre Expansion Project
Vancouver, British Columbia
PWL Partnership Landscape Architects Inc.

DESIGN



NATIONAL HONOUR

Dublin Grounds of Remembrance
Dublin, Ohio
PLANT Architect Inc.

DESIGN



NATIONAL HONOUR

Dublin Grounds of Remembrance
Dublin, Ohio
PLANT Architect Inc.

DESIGN



NATIONAL HONOUR

Dublin Grounds of Remembrance
Dublin, Ohio
PLANT Architect Inc.

DESIGN



NATIONAL HONOUR

Dublin Grounds of Remembrance
Dublin, Ohio
PLANT Architect Inc.

DESIGN



NATIONAL HONOUR

Renaissance du lieu historique du Canada Cartier-Brébeuf
Québec, Québec
Groupe IBI/DAA

DESIGN



NATIONAL HONOUR

Renaissance du lieu historique du Canada Cartier-Brébeuf
Québec, Québec
Groupe IBI/DAA

DESIGN



NATIONAL HONOUR

Renaissance du lieu historique du Canada Cartier-Brébeuf
Québec, Québec
Groupe IBI/DAA

DESIGN



NATIONAL HONOUR

Renaissance du lieu historique du Canada Cartier-Brébeuf
Québec, Québec
Groupe IBI/DAA

DESIGN



NATIONAL HONOUR

The Bay of Beauport | An Urban Beach
Beauport Bay, Québec
Plania Inc.

DESIGN



NATIONAL HONOUR

The Bay of Beauport | An Urban Beach
Beauport Bay, Québec
Plania Inc.

DESIGN



NATIONAL HONOUR

The Bay of Beauport | An Urban Beach
Beauport Bay, Québec
Plania Inc.

DESIGN



NATIONAL HONOUR

West Rosedale Urban Design Plan and The North Bank (Edmonton Legacy) Edmonton, Alberta Carlyle and Associates

PLANNING AND ANALYSIS



NATIONAL HONOUR

West Rosssdale Urban Design Plan and The North Bank (Edmonton Legacy)

Edmonton, Alberta
Carlyle and Associates

PLANNING AND ANALYSIS



NATIONAL HONOUR

West Rosssdale Urban Design Plan and The North Bank (Edmonton Legacy)
Edmonton, Alberta
Carlyle and Associates

PLANNING AND ANALYSIS



NATIONAL HONOUR

Escarpment Area District Plan
Ottawa, Ontario
Urban Strategies Inc.

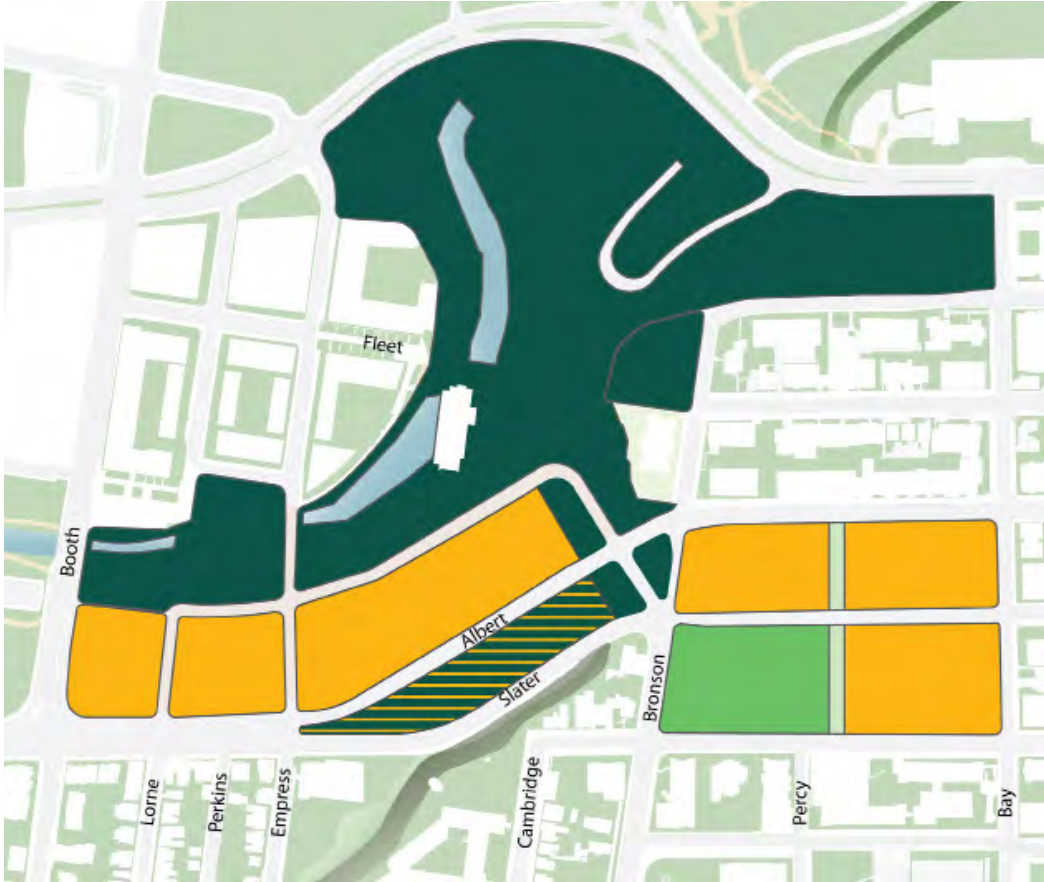
PLANNING AND ANALYSIS



NATIONAL HONOUR

Escarpment Area District Plan
Ottawa, Ontario
Urban Strategies Inc.

PLANNING AND ANALYSIS



NATIONAL HONOUR

Escarpment Area District Plan
Ottawa, Ontario
Urban Strategies Inc.

PLANNING AND ANALYSIS



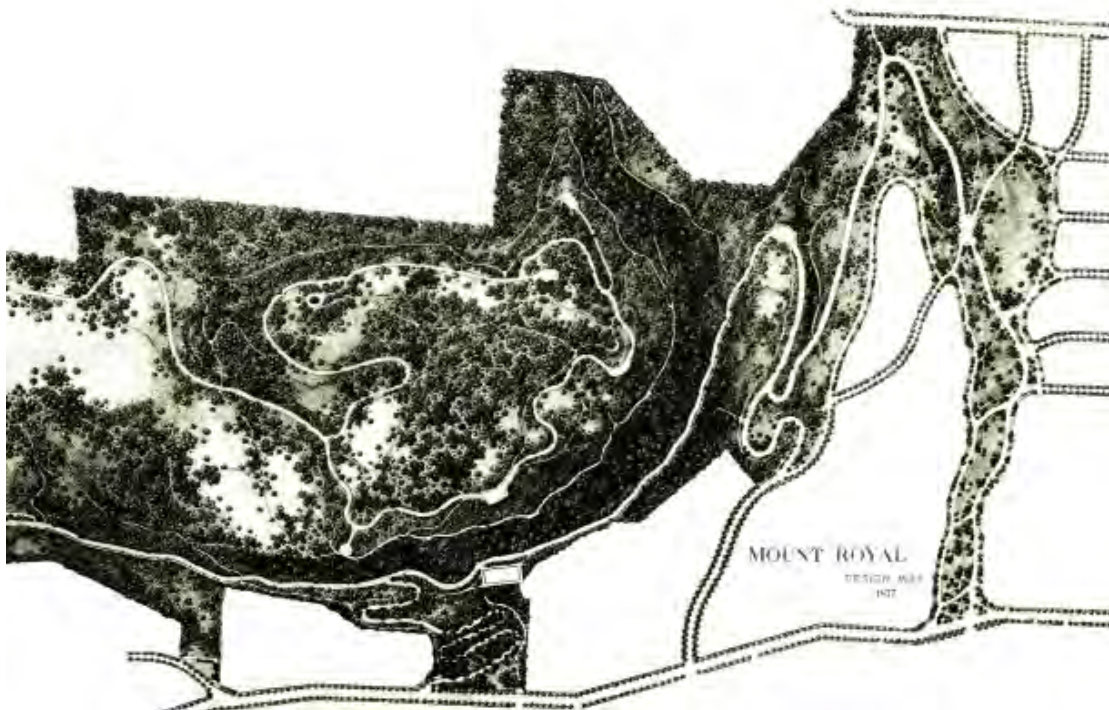
NATIONAL HONOUR

Mount Royal in the works of Frederick Law Olmsted

Ville De Montréal, Direction des grands parcs et de la nature en ville

COMMUNICATIONS

MOUNT ROYAL IN THE WORKS OF FREDERICK LAW OL MSTED



I have the honor to comply with your request that I would report in writing the substance of certain observations verbally made you last Monday, in regard to your property of Mount Royal.

FREDERICK LAW OL MSTED'S PLACE IN THE HISTORY OF LANDSCAPE DESIGN

Frederick Law Olmsted was the dominant figure in the creation of a profession of landscape architecture in North America during the second half of the Nineteenth century. The extent of his professional practice alone is impressive. He carried out landscape projects from Boston to San Francisco Bay, and from Montreal to Atlanta. Between 1857, when he and Calvert Vaux won the design competition for Central Park in New York City, and 1895, the year of his retirement, he and his partners and staff undertook some five hundred commissions. The firm that he founded, led thereafter by his sons, went on to add three thousand more commissions during

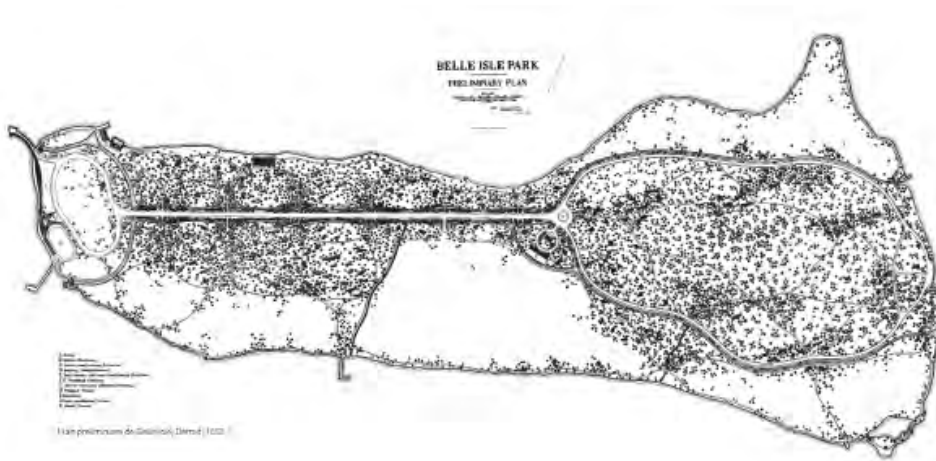
During his years of practice, Olmsted developed a distinctive design style that produced a unified landscape experience and gave the spaces he created a powerful psychological effect. At the same time he designed on a larger scale than any of his predecessors on this continent, creating comprehensive systems of parks and parkways that constituted the most important examples of city planning of his era. He based his design and planning work on a remarkably extensive experience as observer and commentator on life in America. All of these aspects of the man and his career stemmed from his desire to use landscape architecture to meet the

NATIONAL HONOUR

Mount Royal in the works of Frederick Law Olmsted

Ville De Montréal, Direction des grands parcs et de la nature en ville

COMMUNICATIONS



SOUTH PARK, CHICAGO

For their next great park, the South Park of Chicago, Olmsted and Vaux again used water features to unify three very different, even disparate, sections. The thousand-acre park site consisted of an inland meadow and lakeside area of beach, sand dune and swamp, which were connected by a narrow strip 700 feet wide and nearly a mile long. In their plan, Olmsted and Vaux proposed to create ponds in the inland section along with picnic areas and hundred-acre meadow; these then connected to the lakeside section via a formal canal.

The marsh near Lake Michigan would be dredged to create an intricate shoreline and scattered islands in extensive lagoons. With this plan, the designers conceived the first example of the "Prairie River" that would become the iconic accomplishment of Midwestern landscape architects such as Jens Jensen and O.C. Simonds a full

can make shores as intricate, as arborescent and as densely overhung with foliage as any," Olmsted assured Chicagoans in his original report of 1871, adding that "if you cannot reproduce the tropical forest in all its mysterious depths of shade and visionary reflections of light, you can secure a combination of the fresh and healthy nature of the North with the restful, dreamy nature of the South..."¹⁸

The landscape character of the two principal sections of the South Park drew from the natural setting—prairie and lakeside marsh. But in each case the designers fused them with classic landscapes and the beneficial qualities they possessed: on the one hand the graceful, undulating terrain and openness of the English pastoral park, and on the other the intense richness and profusion of nature in subtropical and tropical places.

NATIONAL HONOUR

Mount Royal in the works of Frederick Law Olmsted

Ville De Montréal, Direction des grands parcs et de la nature en ville

COMMUNICATIONS

For Olmsted, the great treasure of Mount Royal was the scenery it possessed in the vistas it provided and the landscape experience it could provide with judicious and imaginative management of its vegetation.



PROSPECT PARK, BROOKLYN

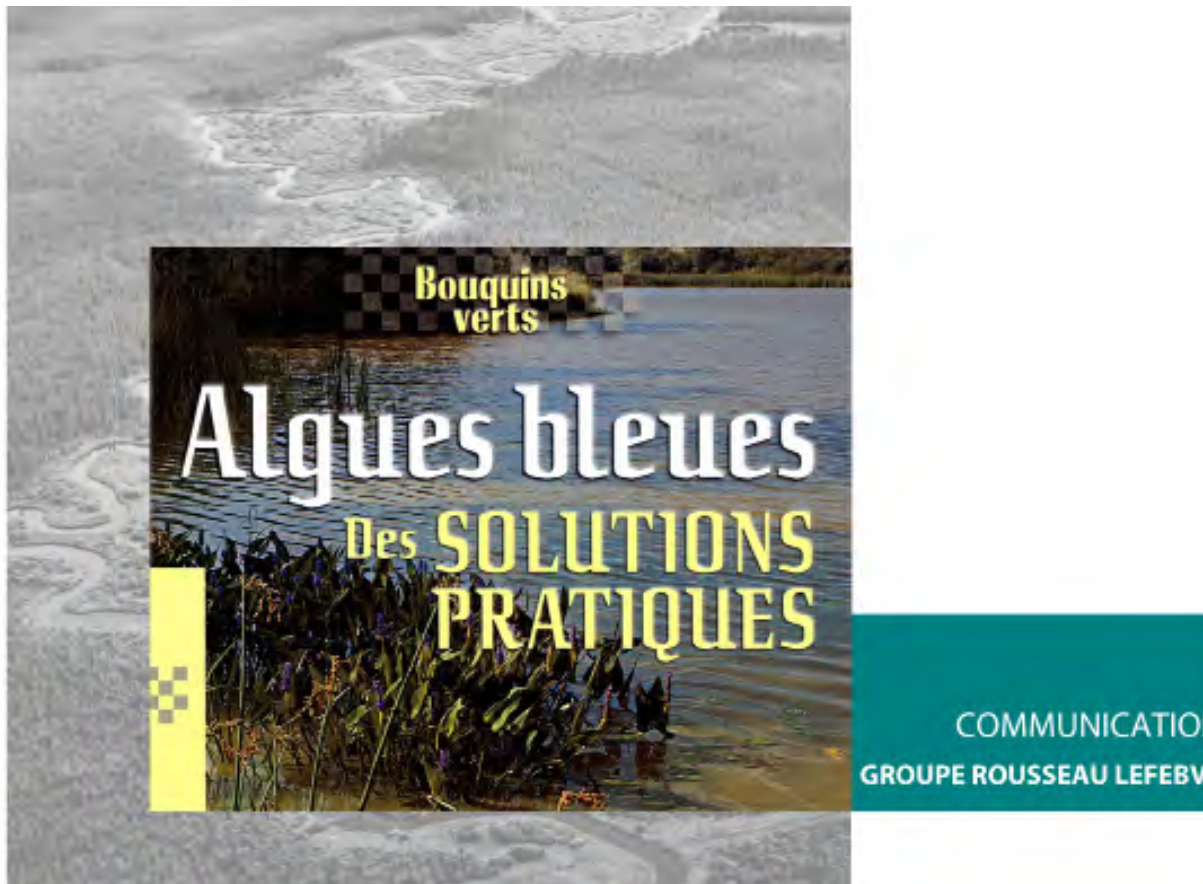
The site of Olmsted and Vaux's second urban park, Prospect Park in Brooklyn, which they began to design in 1865, was far better suited to their purposes than the area of Central Park had been. A glacial ridge ran through the property, on one side of which was flat farmland well suited for creating a lake, while on the other side open fields and gravel pits were easily regraded to produce the long meadow, the most fully realized "pastoral" landscape they ever created. It remains today the most instructive example of the treatment that Olmsted proposed for the Glades section of Mount Royal.

A simple division of the Prospect Park site into three unconnected sections—meadow, woods, and lake—was not sufficiently varied or coherent. To solve the problem, the designers cut a steep-sided ravine through the ridge and constructed an artificial waterway beginning as a series of pools next to the meadow and then flowing over rapids and falls to the lake below. The water for this stream was supplied by a great steam-powered pump that drew from a deep well. As with Central Park, engineering was employed to create a natural-appearing but highly constructed landscape feature.

NATIONAL HONOUR

Livre: Algues Bleues, Des Solutions Pratiques
Group Rousseau LeFebvre

COMMUNICATIONS



NATIONAL HONOUR

Livre: Algues Bleues, Des Solutions Pratiques
Group Rousseau LeFebvre

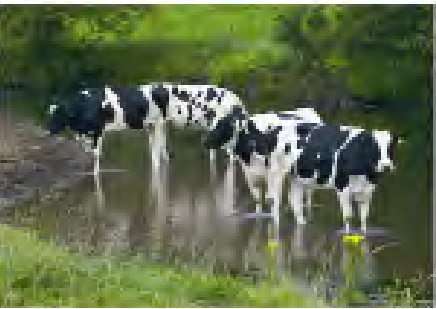
COMMUNICATIONS



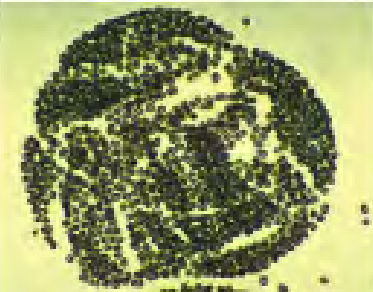
NATIONAL HONOUR

Livre: Algues Bleues, Des Solutions Pratiques
Group Rousseau LeFebvre

COMMUNICATIONS



2



NATIONAL HONOUR

Vancouver International Airport: A Gateway Landscape
Sea Island, Richmond, British Columbia
Sharp & Diamond Landscape Architecture Inc.

LANDSCAPE MANAGEMENT



CANADA



LOWER MAINLAND



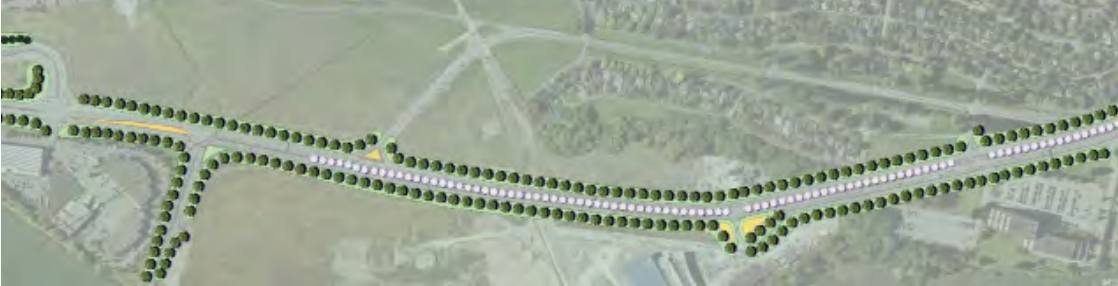
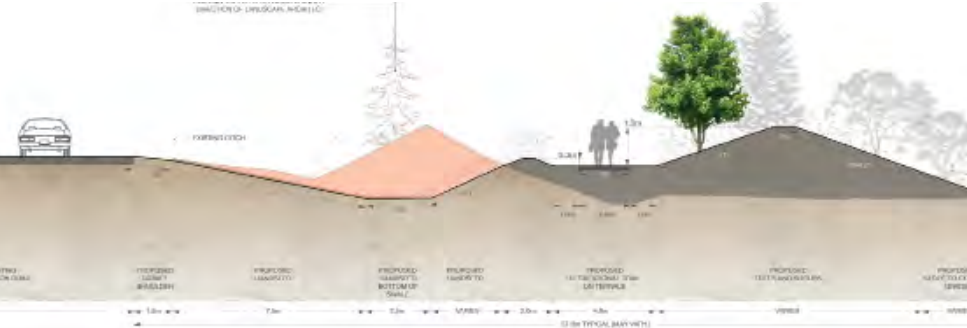
YVR // SEA ISLAND

NATIONAL HONOUR

Vancouver International Airport: A Gateway Landscape

Sea Island, Richmond, British Columbia
Sharp & Diamond Landscape Architecture Inc.

LANDSCAPE MANAGEMENT



NATIONAL HONOUR

Vancouver International Airport: A Gateway Landscape
Sea Island, Richmond, British Columbia
Sharp & Diamond Landscape Architecture Inc.

LANDSCAPE MANAGEMENT



NATIONAL HONOUR

Vancouver International Airport: A Gateway Landscape

Sea Island, Richmond, British Columbia
Sharp & Diamond Landscape Architecture Inc.

LANDSCAPE MANAGEMENT



NATIONAL HONOUR



CSLA AAPC

Canadian Society of
Landscape Architects L'Association des architectes
paysagistes du Canada

NATIONAL MERIT

Shops at Don Mills
Toronto, Ontario
Quinn Design Associates Inc.

DESIGN



NATIONAL MERIT

Shops at Don Mills
Toronto, Ontario
Quinn Design Associates Inc.

DESIGN



NATIONAL MERIT

Shops at Don Mills
Toronto, Ontario
Quinn Design Associates Inc.

DESIGN



NATIONAL MERIT

Shops at Don Mills
Toronto, Ontario
Quinn Design Associates Inc.

DESIGN



NATIONAL MERIT

Shops at Don Mills
Toronto, Ontario
Quinn Design Associates Inc.

DESIGN



NATIONAL MERIT

E.C. Brown Wetland
Pelham, Ontario
Niagara Peninsula Conservation Authority

LANDSCAPE MANAGEMENT



NATIONAL MERIT

E.C. Brown Wetland
Pelham, Ontario
Niagara Peninsula Conservation Authority

LANDSCAPE MANAGEMENT



NATIONAL MERIT

E.C. Brown Wetland
Pelham, Ontario
Niagara Peninsula Conservation Authority

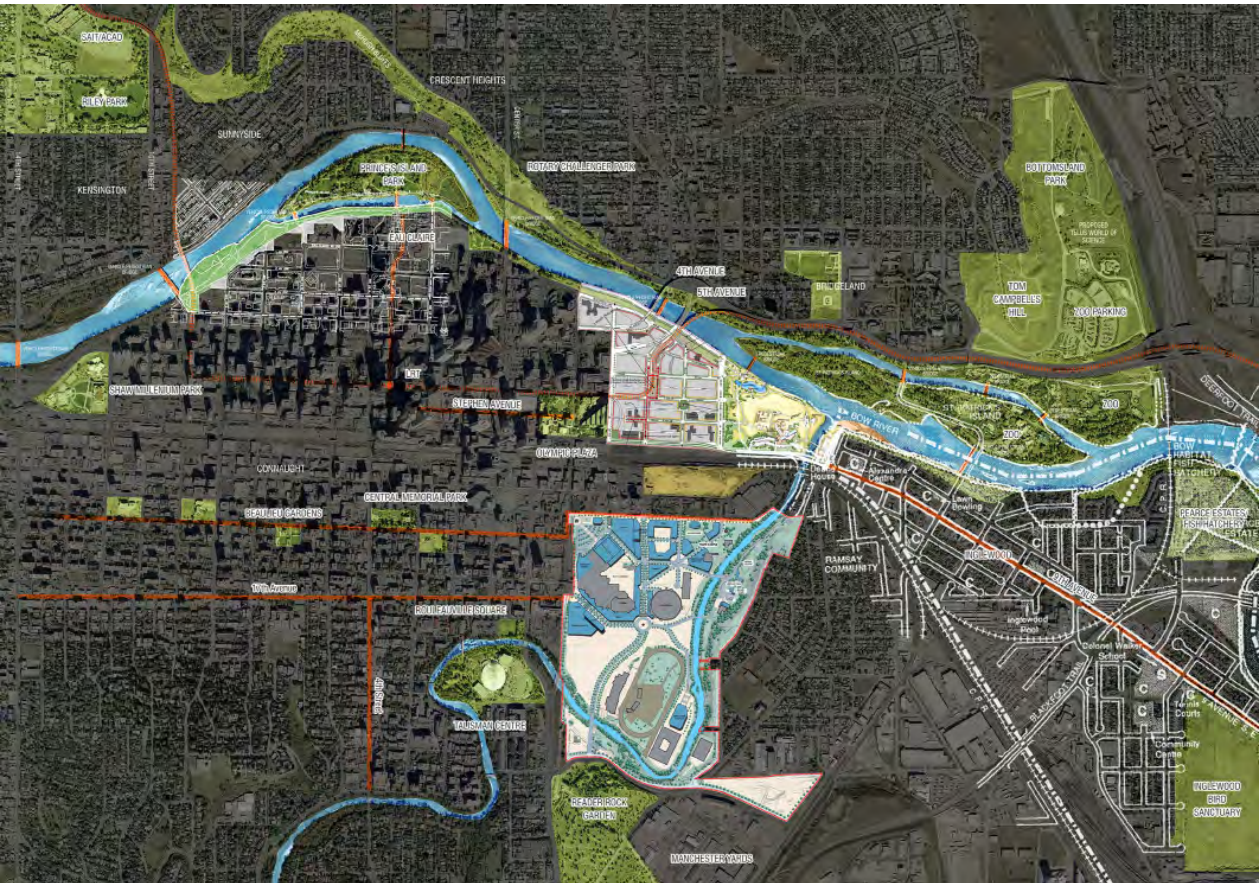
LANDSCAPE MANAGEMENT



NATIONAL MERIT

The RiverWalk Master Plan Calgary, Alberta Stantec Consulting Ltd.

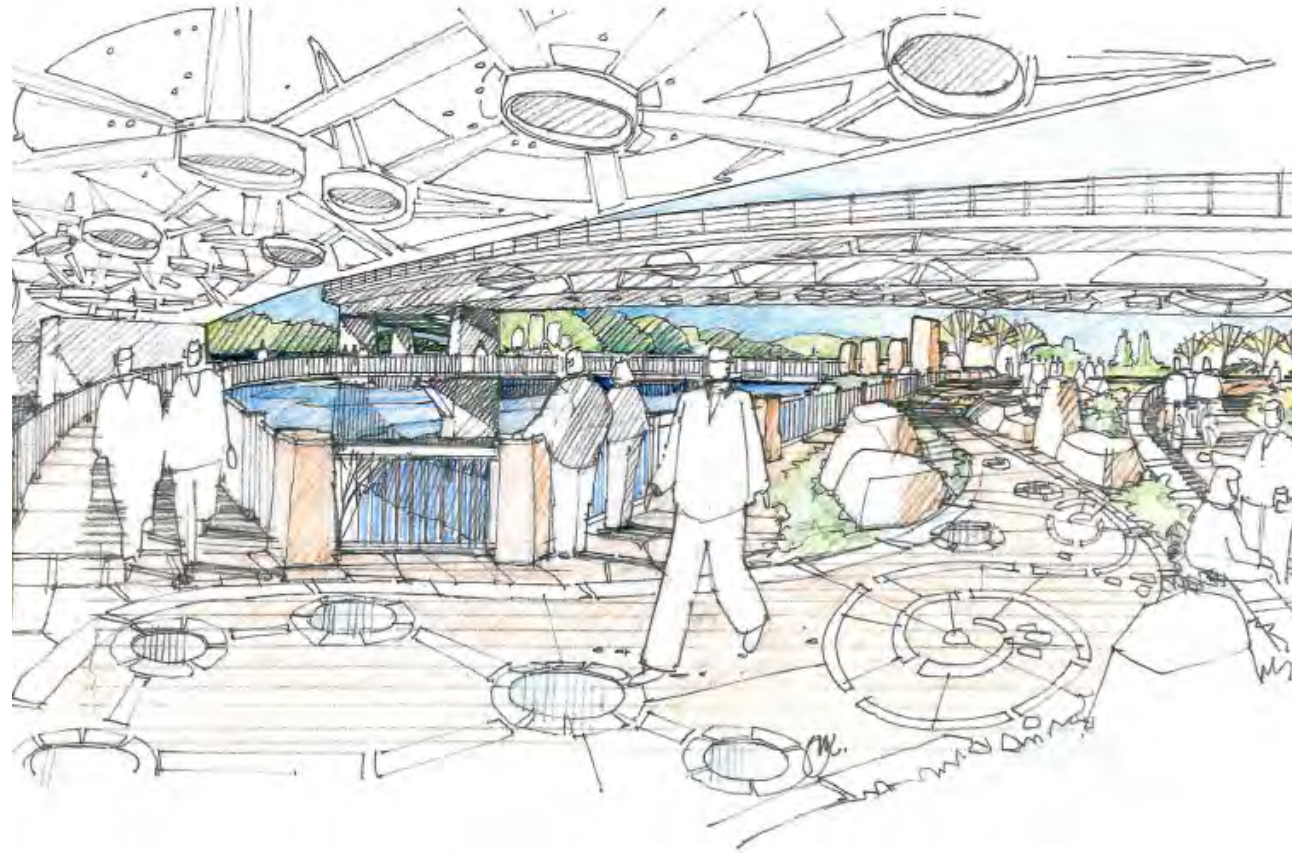
PLANNING AND ANALYSIS



NATIONAL MERIT

The RiverWalk Master Plan Calgary, Alberta Stantec Consulting Ltd.

PLANNING AND ANALYSIS



NATIONAL MERIT

The RiverWalk Master Plan
Calgary, Alberta
Stantec Consulting Ltd.

PLANNING AND ANALYSIS



NATIONAL MERIT

The RiverWalk Master Plan
Calgary, Alberta
Stantec Consulting Ltd.

PLANNING AND ANALYSIS



NATIONAL MERIT

Une serre pour protéger la vie!
Montréal, Québec
Beauregard et Associés

NEW DIRECTIONS



NATIONAL MERIT

Une serre pour protéger la vie!
Montréal, Québec
Beauregard et Associés

NEW DIRECTIONS



NATIONAL MERIT

Une serre pour protéger la vie!
Montréal, Québec
Beauregard et Associés

NEW DIRECTIONS



NATIONAL MERIT